



# Munters GreenClimate Climate Controller

Munters GreenClimate controller provides a comprehensive climate control system for industrial greenhouses. It manages all aspects of the greenhouse climate, enabling the farmer to maximize both efficiency and yields.

## Features

- Cost-effective solution provides a high return on investment
- Automated control provides your plants with an ideal environment
- Intelligent climate control reduces heating and cooling costs
- Alarms package keeps the farmer up to date in real time about any issues that arise
- Advanced data storage enables high level of data analysis



Munters GreenClimate is a cost-effective system suitable for any climate-controlled greenhouse, capable of providing a large range of climatic conditions.

GreenClimate controller helps to achieve a higher climate uniformity and the desired indoor conditions, managing parameters like temperature (cooling, heating), relative humidity (ventilation, air circulation, heating) and climate uniformity (air circulation).

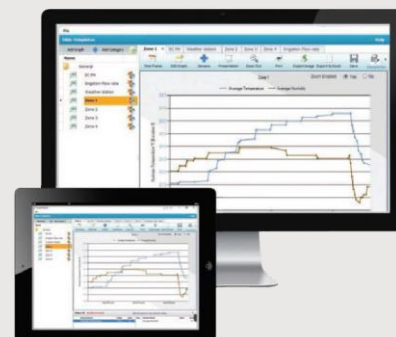
Each controller can manage up to 4 independent climate zones, while weather station information is shared between all zones. Furthermore, a single network of interconnected controllers is able to control up to 50 zones. All functions respond in real time to changes in the climate

## Munters GreenNet

Munters GreenClimate can be integrated with Munters GreenNet, an advanced communication and management software that can manage an entire line of controllers (climate or irrigation and climate combined).

GreenNet supports extensive data collection, through a user friendly Graphic User Interface. It enables remote control over product configuration and management, indoor climate, along with analytics of each controller's performance.

Munters Green CommBox hardware unit allows remote access to Munters GreenClimate from any computer, tablet or smartphone.





**Munters GreenClimate gives control over:**

- **Top/side ventilation**
- **Screens**
  - > Shading
  - > Energy
- **Heating**
  - > On/off heating and up to five water heating networks per zone
  - > Upgraded heating network algorithm enables high calculation accuracy, performance, and energy efficiency
- **Misting**
  - > Up to eight misting valves per zone
  - > Controlled by temperature, RH and VPD triggers
- **Fans and cooling pads**
  - > Up to eight fan stages per zone
  - > Controlled by temperature, RH and/or time
  - > Integrated air inlet control
- **Air circulation**
  - > Controlled by time and/or trigger, temperature, and RH
- **CO<sub>2</sub> level**
  - > Active/passive responses
- **Lighting**
  - > Up to four strings per zone
  - > Cyclic or fixed operations
- **Crop protection (four-step process)**
  1. Prepare
  2. Spray
  3. Process
  4. Purge

**Accessories**



**Expansion Box**

Each controller can support up to 3 expansion boxes. Adds up to 64 relays.



**Weather Station**

Provides data on outdoor conditions (temperature, humidity, wind speed and direction, rain detection, radiation).



**CO<sub>2</sub> Sensor**

Measures CO<sub>2</sub> and sends data to GreenClimate to treat CO<sub>2</sub> (e.g. increasing ventilation), when CO<sub>2</sub> level rises above the user defined set point.



**GreenBox T+H**

Unit includes a temperature and a humidity sensor and sends data to GreenClimate to initiate

dehumidification, heating, or cooling process.